

# Norwich Deaf Community News *Extra*

No. 99

March 2020

**Welcome to our March Newsletter.**

## At the Norwich Deaf Community Centre this month

### Norwich Deaf Social Club events:

Saturday 7<sup>th</sup> March Games Night - Whist Drive (7.30pm)

Saturday 14<sup>th</sup> March - Social Club (7.30pm)

Saturday 21<sup>st</sup> March - Games Night - Kurling (7.30pm)

Saturday 28<sup>th</sup> March - Social Club (7.30pm)

### Deaf Connexions events:

Sign Zone Wednesday evenings 6.30pm-8.30pm (Norwich)

BSL Level 1 Friday evenings 7pm-9pm at Wymondham Leisure Centre

BSL Level 1 & 2 Monday evenings 7pm-9pm at WNDA King's Lynn

### Deaf Centre

Knitting Group - Friday morning.

### Future Events:

Wednesday 4<sup>th</sup> March leave Deaf Centre 7.00am travel by coach, visit the British Museum in London. Cost £22.00 per person.

Cooking Classes with Maz on Friday mornings, every two weeks for 2 hours. Making cakes, biscuits, pizza, curry. Starting soon - see posters at Deaf Centre.

Look out for Posters ... and more events.

Norwich Deaf Community Centre, Vauxhall St, Johnson Place, Norwich NR2 2SA  
Voice tel & fax 01603 660889 Minicom 01603 661113 Mobile sms text 07932  
069352 e-mail [mail@deafconnexions.org.uk](mailto:mail@deafconnexions.org.uk) [www.deafconnexions.org.uk](http://www.deafconnexions.org.uk)

**deafconnexions**

Registered Charity No: 1077229

# Norwich Deaf Community News *Extra*

No. 99

March 2020

## What's been happening in the Norfolk Deaf Community?

### Healthy Walk

Healthy walk on Thursday 13<sup>th</sup> February was at Catton Park. A lovely walk but only able to do half the walk due to the heavy rain. We will return to do the other half when the weather is warmer. Thank you to Julie & Ann for the photos.



Norwich Deaf Community Centre, Vauxhall St, Johnson Place, Norwich NR2 2SA  
Voice tel & fax 01603 660889 Minicom 01603 661113 Mobile sms text 07932  
069352 e-mail [mail@deafconnexions.org.uk](mailto:mail@deafconnexions.org.uk) [www.deafconnexions.org.uk](http://www.deafconnexions.org.uk)

**deafconnexions**

Registered Charity No: 1077229

# Norwich Deaf Community News *Extra*

No. 99

March 2020

## Art School

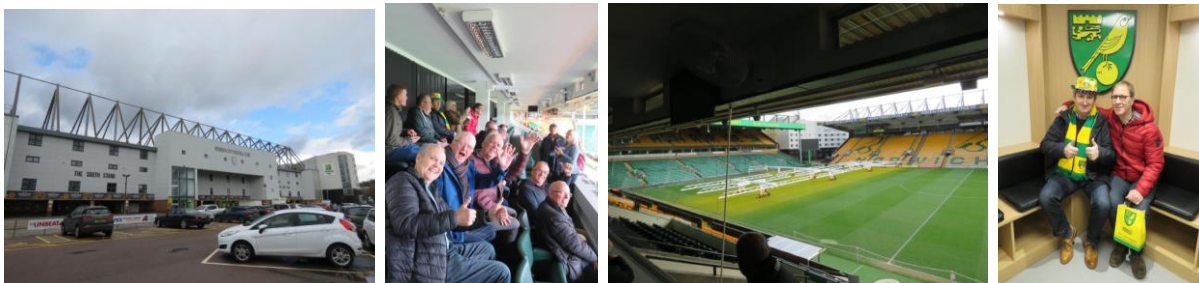
Deaf Art School Tuesday's 10.30am-1pm at the Deaf Centre

Lovely progress being made with the Russian Dolls.



## Tour of Norwich City Football Club

An excellent morning at the Norwich City Football ground on Sunday 23<sup>rd</sup> March. We had a guided tour of the trophy room, changing rooms and even touch the actual ground and sit in the Managers & players' seats. Also finding out more about the club history.



Norwich Deaf Community Centre, Vauxhall St, Johnson Place, Norwich NR2 2SA  
Voice tel & fax 01603 660889 Minicom 01603 661113 Mobile sms text 07932  
069352 e-mail [mail@deafconnexions.org.uk](mailto:mail@deafconnexions.org.uk) [www.deafconnexions.org.uk](http://www.deafconnexions.org.uk)

**deafconnexions**

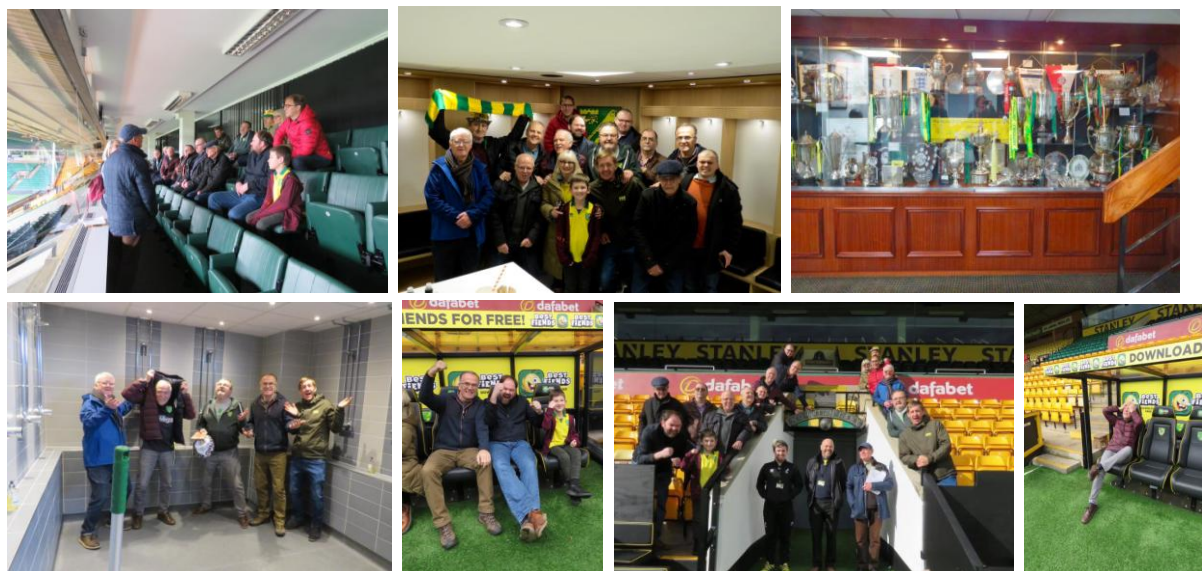
Registered Charity No: 1077229

# Norwich Deaf Community News *Extra*

No. 99

March 2020

Norwich City Football Club... more photos



All who attended had a great time looking around.

Thank you to our interpreter Autumn and all those who arranged the event.

## What's Happening in the rest of East Anglia?

### **Signed Performances at Norwich Theatre Royal**

If you are deaf and attend a signed performance you can get a discount for you and the person that comes with you. Please ask at Open Door if you need help to book.

#### **Norwich Theatre Royal Signed Performances**

Thu 26 Mar 7.30pm Les Miserables

Sat 25 Apr 2.30pm A Monster Calls

Sat 9 May 2.30pm We Will Rock You

Sat 23 May 2.30pm Derren Brown

Sat 18 July 2.30pm Six The Musical

Sun 3 Jan 2021 1.00pm Dick Whittington & his cat

Norwich Deaf Community Centre, Vauxhall St, Johnson Place, Norwich NR2 2SA  
Voice tel & fax 01603 660889 Minicom 01603 661113 Mobile sms text 07932  
069352 e-mail [mail@deafconnexions.org.uk](mailto:mail@deafconnexions.org.uk) [www.deafconnexions.org.uk](http://www.deafconnexions.org.uk)

**deafconnexions**

Registered Charity No: 1077229

# Norwich Deaf Community News *Extra*

No. 99

March 2020

## Norwich Playhouse - Signed Performances

Fri 20 March 7.30pm Juliet & Romeo

Wed 1 April 7.30pm Dead Good

## Norwich Theatre Royal Captioned Performances

Thu 26 Mar 2.30pm Les Miserables

Thu 23 Apr 2.30pm A Monster Calls

Wed 6th May 2.30pm We Will Rock You

Sun 19 Jul 2.30pm Six The Musical

Sun 3 Jan 2021 5.00pm Dick Whittington & his cat

## New Wolsey Theatre, Ipswich

### Signed Performance

Sat 21 March 11am – Storymaker – Little Story

Sat 21 March 12pm – Storymaker – Big Story

### Captioned

Fri 20 March 7.45pm - Macbeth

### Captioned & Signed Performance

Wed 25 March 7.45pm Oliver Twist

Thurs 26 March 1.30pm & 7.45pm Oliver Twist

Fri 27 March 7.45pm Oliver Twist

Sat 28 March 2.30pm & 7.45pm Oliver Twist

Tues 31 March 7pm Oliver Twist

Wed 1 April 2.30pm & 7.45pm Oliver Twist

Thurs 2, Fri 3 & Sat 4 April 7.45pm Oliver Twist

Tues 7 April 7pm The Mystery Of The Raddlesham Mumps

Norwich Deaf Community Centre, Vauxhall St, Johnson Place, Norwich NR2 2SA

Voice tel & fax 01603 660889 Minicom 01603 661113 Mobile sms text 07932

069352 e-mail [mail@deafconnexions.org.uk](mailto:mail@deafconnexions.org.uk) [www.deafconnexions.org.uk](http://www.deafconnexions.org.uk)

**deafconnexions**

Registered Charity No: 1077229

# Norwich Deaf Community News *Extra*

No. 99

March 2020

## Subtitled Cinema

### **ODEON**

Norwich Odeon

Dark Waters subtitled (12a)

Thu 05 March 20:40

Downhill subtitled (15)

Mon 02 March 15:10

Emma subtitled (PG)

Tue 03 March 16:40

Like A Boss subtitled (15)

Thu 27 Feb 16:30

Sonic The Hedgehog subtitled (PG)

Sun 01 March 13:00

The Addams Family subtitled (PG)

Sat 29 Feb 10:15, Sun 01 March 10:15

The Invisible Man subtitled (15)

Wed 04 March 19:30

### **VUE**

Norwich Vue

Dolittle subtitled (PG)

Tue 03 March 17:05

Sonic The Hedgehog subtitled (PG)

Sun 01 March 11:00

### **Picturehouse**

Norwich Cinema City Picturehouse

Dark Waters subtitled (12a)

Sun 01 March 19:30, Mon 02 March 14:50

### **Merlin cinemas** Experience with the Magic of the Movies

Cromer Norwich Regal Merlin

2-4 Hans Place Cromer NR27 9EQ

Emma subtitled (PG)

Mon 02 March 17:35

The Call Of The Wild subtitled (PG)

Thu 05 March 13:05

Norwich Deaf Community Centre, Vauxhall St, Johnson Place, Norwich NR2 2SA  
Voice tel & fax 01603 660889 Minicom 01603 661113 Mobile sms text 07932  
069352 e-mail [mail@deafconnexions.org.uk](mailto:mail@deafconnexions.org.uk) [www.deafconnexions.org.uk](http://www.deafconnexions.org.uk)

**deafconnexions**

Registered Charity No: 1077229